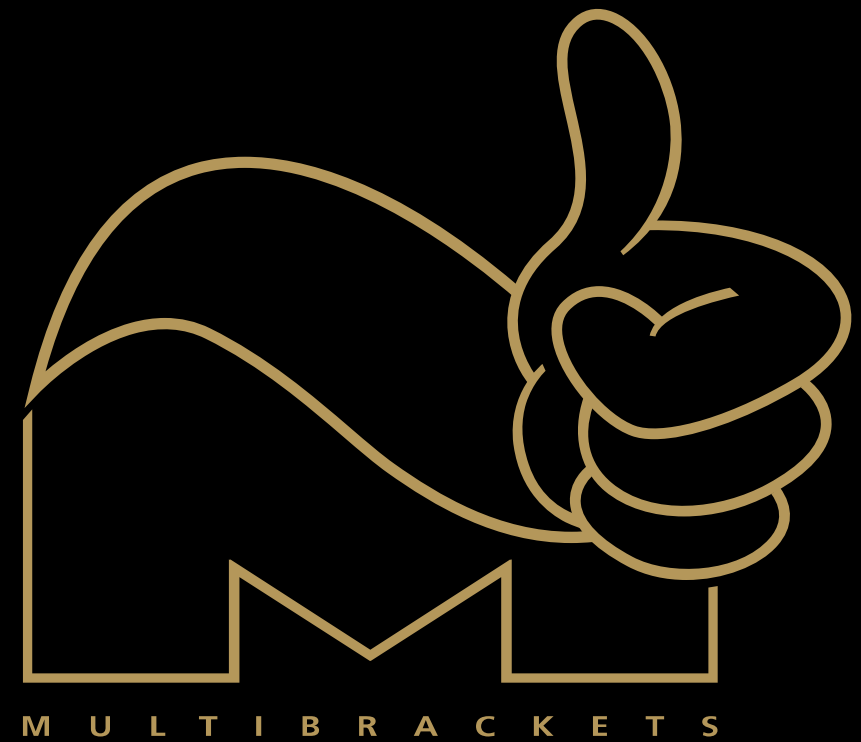


Digital Signage 2015



Multibrackets Europe AB

Döbelnsgatan 21, 11th floor SE-111 40 Stockholm Sweden

Phone: +46 (0)8 - 615 04 00 Fax: +46 (0)8 - 612 31 73 Mail: support@multibrackets.com



OUR strong ties with major AV distributors and installers as well as industry leaders enable us to develop head-end systems specific digital signage solutions to the market needs of your business. We strive to always create simple and intuitive wall mounting solutions for digital signage display setups as well as in-room installations.

Our aim is to consistently find ways to improve on our digital signage products offering.

Maybe it is time for your business to discover a new level of refinement with Multibrackets large screen digital signage solutions.

M Public Display Stand series

This is one of the most flexible and multifunctional display stands of its kind. The Dual display possibility makes this unit optimal for videoconferencing and more detailed presentations where a dual screen scenario might be needed. The various heights is useful for both for conference rooms or other situations where the viewers are sitting down and in public areas such as trade shows, hospitals and other places where the audience are standing. So get an optimal positioning for both seated and standing audiences - in any part of your facility.

Our M Multibrackets Public Display Stand series has a versatile usage area. Mainly made out of a light weight aluminum construction it is both heavy duty and will support most ideas and environments it is placed in.

When developed much emphasis has been put into the stability and overall quality of the display stand, both when put in place but also when in movement. As a stable and sophisticated display stand base with wheels are included as standard. This means the series is very easy to move around. This makes it a perfect partner for use in public

environments such as conference rooms, class rooms or hospitals.

The M Multibrackets Public Display Stands can be used with screens in a standard landscape mode or a portrait mode. It can be used with or without shelves, camera holder and power outlet.

The M Multibrackets Public Display Stands can be used with screens in standard landscapes mode or a portrait mode. The optional display stand base can even be drilled into the floor to make the display stand stay put in any public environment it is placed in.



Present digital content wherever you want it
Easy to assemble and install



110 Tilt & Table
Flips into a table position in just seconds



Additional models have pre configured media box solutions
M Public Display Stand Series can be equipped with camera holder, display stand base and shelf etc.

Also available in black

EXAMPLE SPECIFICATION M Public Display Stand 180 Single Silver/Black

For screen size:	40-63"
Feature:	Highly customizable
VESA standard:	Up to 800x500 mm
Article No:	7 350 022 735 354
Size in mm: (WxDxH)	993x1800x576 mm
Adjustable height / Tilt:	Yes / Yes, -5°~+15°
Weight:	25 kg
Colour:	Silver/Black
Max load:	90 kg
DVD Shelf / Camera holder:	Optional, not included
Power rail 220V:	Built-in
Package size:	550x350x150, 1650x100x175 mm
Screen position:	Landscape or portrait with tilt
Wheels:	Included, mount base is optional
Mount to floor:	Yes (optional)

M Public Display Stand Series is design protected by Multibrackets. OHIM Reference: 002008821-0001



M Public Display Wall

145/180 Single & Dual

Multibrackets Public Display Wall comes in heights of 145cm or 180cm and is perfectly suited for conference rooms, class rooms or other situations where the viewers are sitting down or standing up. This solution keeps your equipment in its place yet also conserves space. With a single or dual screen option and built in 220V power rail it is optimized for both installers & users.

Holding single screens up to 70" or dual screens up to 55" (dependant on VESA and weight). Makes the usage areas for M Multibrackets Public Display Wall versatile. It easily supports most ideas and environments it is placed in. One such example that is showing tremendous growth is video conferencing and telepresence. As interaction across the globe increases the need for simplified wall mounted solutions are needed.

Constructed mainly made out of a light weight aluminum

construction it is both heavy duty When developed much emphasize has been put into the stability and overall quality of the display wall bracket, making it a perfect partner for use in public environments. The M Multibrackets Public Display Wall can be used with screens in a standard landscape mode or a portrait mode or a portrait mode with or accessories. The system also sports a powerful line of accessories making it possible to tailor the unit after need.

Aluminum heavy duty design
Flexible height adjustment
One or two screens

Cable Management
Built in 220V power rail
Big assortment of accessories

145/180 Dual is the perfect solution for presentations and video conferences. Available in silver and black.

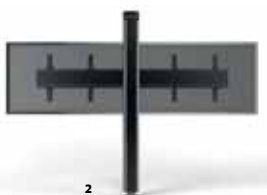


Single wall mount comes in two heights 180 and 145 cm silver and black.



FIG 1-2

Unmounted and mounted 2 screen



M Public Display Stand / M Public Wall Accessories

Multibrackets offers a full line of accessories for the M Public Display Stand/M Public Wall. With the accessories it is possible to tailor the Display Stand/ M Public Wall to your specific needs. From creating the perfect multi-screen video conferencing set up, to more simplified presentation solution for the conference room. Here is a selection some of the accessories available.



Mediabox
A lockable box giving you lockable storage capacity.



Front Shelf
Use one, two or more front shelves mounted on the front of your pillar keeping your IT equipment easily connected and in place. Perfect for a DVD-player, Notebook or similar devices.



Codec Shelf
Installed on the lower backside of the pillar. The codec shelf can hold a mediaplayer, mini PC or other small size devices.



Cable Hooks
Our cable hooks neatly tides up excessive cable and minimizes problems moving the Floorstand around.



Camera Holder
Installed at the very top of the pillar the camera is suitable for holding a camera for videoconferencing.

M Public Video Wall Mount Push

Our innovative design combined with a video wall mount partially pre assembled right out of the box, makes this our fastest installing video wall system ever!

With the market for Video Wall installations growing at a fantastic pace, the need for a high quality, affordable and installer friendly mounting equipment has become in the need by many.

Our M Public Video Wall Mount Push is a video a wall solution quick to install, and easy to configure. Made especially for video wall applications, easy and fast installation and simplified maintenance. Making it an installers dream.

With the M Public Video Wall Mount Push you can create multiple different configurations and screen set ups. Finally you can leave the tedious wall spacers behind. As with other Multibrackets products the installation is built on the first rail installed onto the wall. thereafter the second is put up and leveled very easy as the third etc. No measuring

and guessing needed. We think of it as one of the most simple and fast ways to make video wall installation come to life.

Easy-access to your after-service.

The Push in pop out feature gives easy-access to any display for quick serviceability. This is often one of the major functions needed when building a video wall mounting solution or when integrating a single screen into the wall.

Simply push against the screen to release the lock, then the screen will pop out, you do not need to remove any other screens to access a center screen for maintenance or when placed in recessed areas.

The pop out feature is handled by its scissor arm construction expanding out. Of course the screen is as easily pushed back into place after maintenance is finished.



Create almost any Video Wall configurations imaginable
Ideal for recessed areas or where there is a surround around the whole video wall blocking access
Designed to create a fast, simple and seamless installation
Push in Pop out for easy access and after service
Simple Fine tuning for post-installations

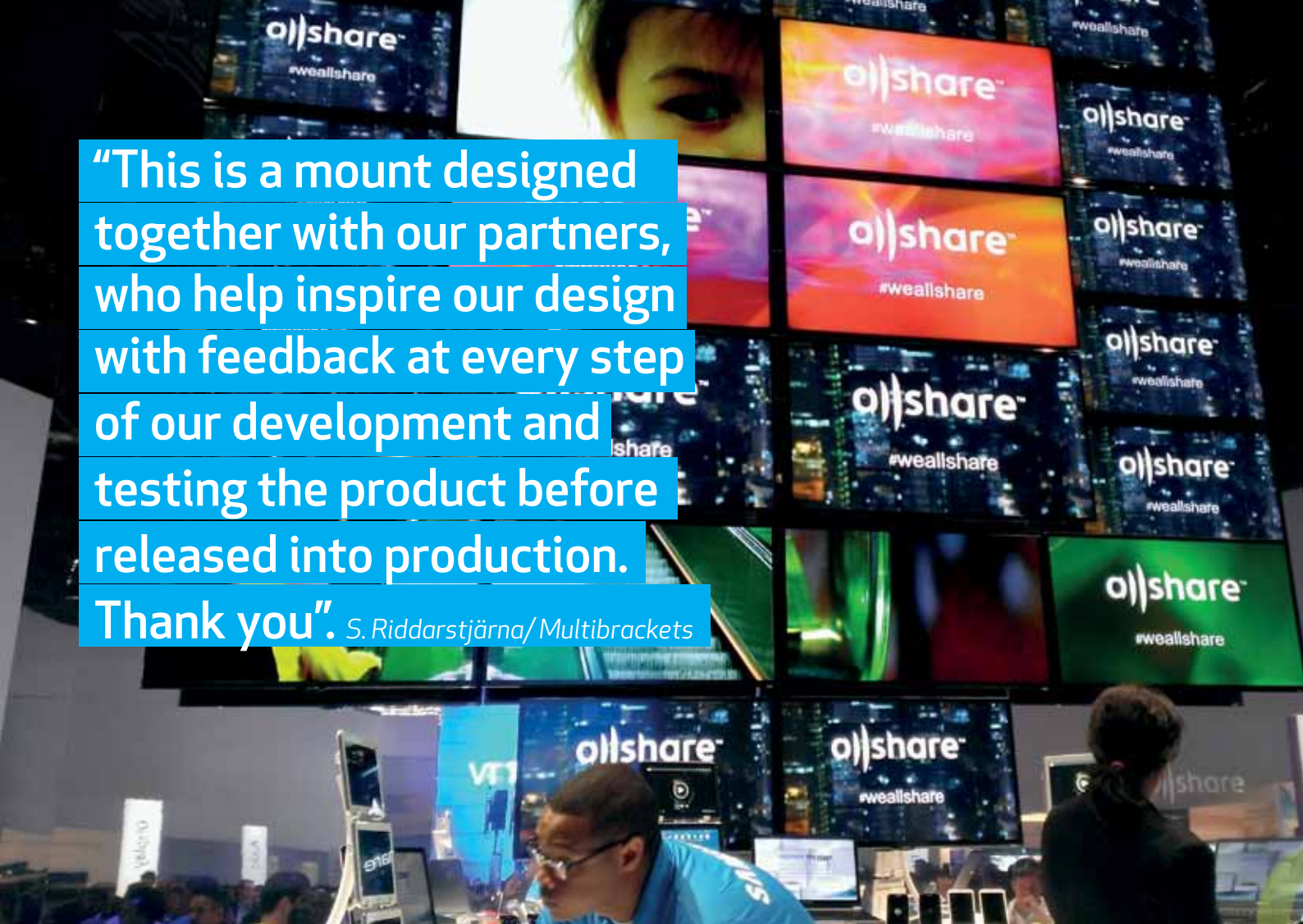


Easy lateral shifts for post-installation (slide the screen/ screens apart or together for perfect alignment)
Create rows of screens 1x2, 1x3, 1x4 or walls 2x2, 3x3 or larger



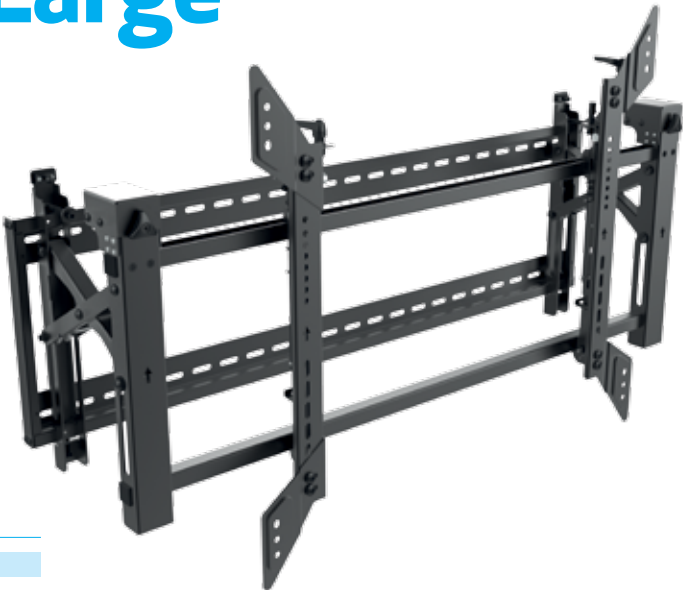
pop out, pop in

“This is a mount designed together with our partners, who help inspire our design with feedback at every step of our development and testing the product before released into production. Thank you”. S.Riddarstjärna/ Multibrackets



M Public Video Wall Mount Push Large

Multibrackets new M Public Video Wall Mount Push Large solves common In-Wall and Video wall challenges of speed of installation, alignment to wall or next screen, serviceability and rigidity. The M Public Video Wall Mount Push Large also provides the ability to install larger VESA specified screens. With this a simple-to-install system that comes pre-assembled we have made it easy to install larger size screens in public spaces. Minimal time is need to configure the bracket but most adjustments are handled through micro-adjustment knobs enabling a screen to be perfectly aligned - quick and easy - without the need of tools.



M Public Video Wall Mount Push Large

For screen size:	55"-100"
VESA standards:	200X200,400X200,300X300,400X400,600X400,800X400,1000X400,600X600,800X600,900X600,1000X600
Article No:	7 350 073 732 067
Colour:	Black
Max load:	70 Kg
Weight:	20 Kg
Size in mm:	1134X685

SPECIFICATION M Public Video Wall Mount Push

For screen size:	37-70"
VESA standard:	200x200, 300x300, 400x200, 300x300, 400x400 (no 200x100 VESA see technical drawing for details)
Vesa by 760mm rail:	600x400
Article No:	7 350 073 730 513
Colour:	Black
Max load:	40Kg
Weight:	6 kg
Size in mm:	760x460

SPECIFICATION M Public Video Wall Mount Rail 760mm

Width:	760mm
Suitable for:	M Public Video Wall Mount Push
Article No:	7 350 073 730 520
Colour:	Black
Max load:	40kg
Weight:	2,5 kg

M Public Video Wall Mount Push HD

MAX 90 KG

The M Public Video Wall Mount Push HD might just be one of the markets most innovative and easy to install video wall mounts available. With numerous post installation possibilities and a tailored pantograph alignment system this might be the most easy to use, yet most powerful video wall mount system you have ever seen.

With the market for Video Wall installations growing at a fantastic pace, the need for a high quality, affordable and installer friendly mounting equipment has become in the need by many. Our M Public Video Wall Mount Push HD is a video a wall solution quick to install, and easy to configure. Made especially for video wall applications. This is a professional mount focusing on multiple screen installations, easy and fast installation and simplified maintenance. Making it an installers dream.

Easy-access to your after-service
The “Pop out” feature gives easy-access to any display for quick serviceability. This is often one of the major functions needed when building a video wall mounting solution or when integrating a single screen into the wall. Simply push against the screen to release the lock, then the screen will pop out, you do not need to remove any other screens to access a center screen for maintenance or when placed in recessed areas.

The pop out feature is handled by its scissor arm construction expanding out. Of course the screen is as easily pushed back into place after maintenance is finished.

8 knobs making detailed adjustments an ease
With the built in fine tune adjustments each of the M Public Video Wall Mount Push HD can be adjusted individually to match “its neighboring screens”. By 8 knobs the screens can be adjusted in depth, side and height. What before could take hours for an installer to measure and re install, is now fixed in a matter of minutes. Truly an installers dream come true.

Super heavy duty construction
The M Public Video Wall Mount Push HD is an iron structure with epoxy painting, holding screens up to 50kg in “pop outed” position. We think this may just be the strongest video wall mount on the market, making continues service and usage of the mounts easy.



Iron structure with max load of 50Kg
Designed to create a fast, simple and seamless installation
Modular mount with unlimited Video Wall display configurations possible
Compatible with landscape or portrait mounting



Monitor tailored spacer kit for the fast on site installations (See list)
Tool-less fine adjustments with 8 knobs for a seamless alignment of the displays
Ideal for recessed areas or where there is a surround around the whole video wall blocking access



Push in Pop out for easy access and after service
Integrated cable management system
Security screws to avoid accidents
VESA, 200, 300 and 400 compatible, additional support of VESA 600 and 800 by adapter kit

NEW!

SPECIFICATION M Public Video Wall Mount Push HD

For screen size:	40 - 70"
Article No:	7 350 073 730 568
VESA standard:	200 x 200, 300 x 200, 300 x 300, 400 x 200, 400 x 400
By adapter kit:	600 x 400 and 800 x 400 VESA Standard
Colour:	Black
Max load:	50 kg
Weight:	11 kg
Size in mm:	760x460

SPECIFICATION M Public Video Wall Mount Push HD Max 90kg

For screen size:	50 - 95"
Article No:	7 350 073 731 749
VESA standard:	200 x 200, 300 x 200, 300 x 300, 400 x 200, 400 x 400
By adapter kit:	up to 900 x 600 VESA Standard
Colour:	Black
Max load:	90 kg
Weight:	11 kg
Size in mm:	760x460
Warranty:	2 years

M Public Video Wallmount 3-Screens



Ultra fast 3-screen installation

M Public Video Wallmount 3 screens is a standard wall mounting system suitable for clients who want to mount a video wall to an existing wall and have confirmed that their wall is able to support the weight of the desired video wall configuration (see specification on screens + video wallmount weight and measurements).

M Extender kit Push HD 600x400/ 800x400

If you need to extend the VESA spec of the M Public Video Wall Mount Push HD to 600x400/800x400 this bracket is needed. Made out of a steel structure, these extenders are made for VESA 600X400/800x400 and painted with epoxy powders



SPECIFICATION M Extender kit Push HD 600x400/800x400

For screen size:	40 - 70"
Article No:	7350073730575/ 7350073730582
VESA standard:	600 x 400, 800 x 400 VESA Standard
Colour:	Black
Max load:	50 kg
Weight:	1 kg

M Spacer kit Push HD

By screen unique templates the measurement to the next screen on side and on top will be very precise, Workable for both landscape and portrait solutions. By implementing this standardized way of building a video wall you save a tremendous amount of time for each video wall installed.



With the Spacer kit Push your video wall will be accurate, regardless of your walls condition.

The M Public Video Wallmount 3 Screens (3x1) screen array configuration is: 3 screens wide x1 screen high.

Combined with additional M Public Video Wallmount 3 Screens, you can easily build a video wall consisting of 6 or 9 screens.

This is a perfect solution for customers who need a wall mounted video wall system for VTC, digital signage applications and more.

With the right combination of durability and serviceability, we provide standardized and cost efficient solutions or even fabricated steel and aluminum video walls designed to fit most applications or environments.

Note: All Multibrackets video walls are designed with the critical application in mind.



Fine tune the screens to a perfect level with each other.

SPECIFICATION M Public Video Wallmount 3-Screens 40-55" Black

For screen size:	40-55" for each screen
Feature:	3 screen assembly
VESA standard:	Up to 800x400 mm
Article No:	7 350 022 739 819
Size in mm: (WxDxH)	3640 x 75 x 460
Adjustable height / Depth:	Yes / Yes
Weight:	20 kg
Colour:	Black
Max load per screen:	60 kg
Max load total:	180 kg



M Public Video Wall Stand

3/4/6/9-Screens

With the optional floor stand base you can stand or mount it to the floor and make the installation permanent.

M Public Video Wall Stand 3 Screens (3x1) screen array configuration is: 3 screens wide x 1 screens high.

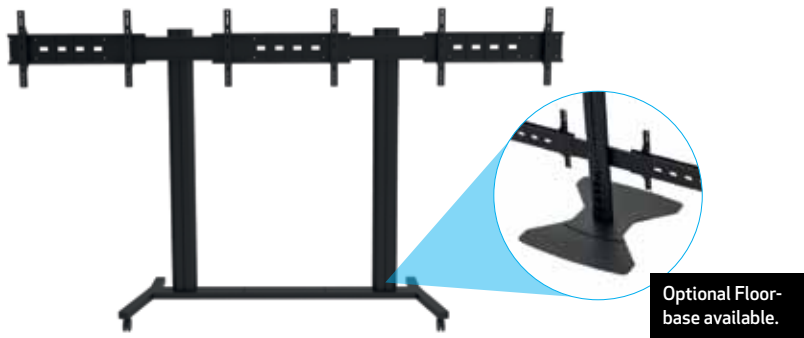
Based on 180cm high pillar made out of durable aluminum, the possibilities for height adjustments are very good and it is possible to provide perfect viewing angle for both a sitting and a standing audience. There is a power rail built into each pillar, providing 220V power to the screens or peripheral. This makes installation and cable management

an ease. This movable video wall solution creates a solution that can be used for presentations, trade shows, store or office entrances.

This is a perfect solution for customers who need a mobile presentation system for VTC, digital signage applications, and more.

Note: All Multibrackets video walls are designed with the critical application in mind.

With the right combination of durability and serviceability, we provide standardized and cost efficient solutions or even custom fabricated steel and aluminum video walls designed to fit most applications or environments.



SPECIFICATION M Public Video Wall Stand 3-Screens 40-55" Black

For screen size:	40-55" for each screen
Feature:	3 screen assembly
VESA standard:	Up to 800x400 mm
Article No:	7 350 022 739 789
Size in mm: (WxDxH)	3640 x 600 x 1800
Adjustable height / Depth:	Yes / Yes
Weight:	25 kg
Colour:	Black
Max load per screen:	40 kg
Max load total:	120 kg
Wheel Base / Floor Base:	Included / Optional
Power Rail:	220V, built-in



“This freestanding video wall carts makes it possible to construct video wall in prominent locations for temporary applications”.

-Daniel Gustavsson, AV-Installer

M Public Video Wall Stand 4-Screens

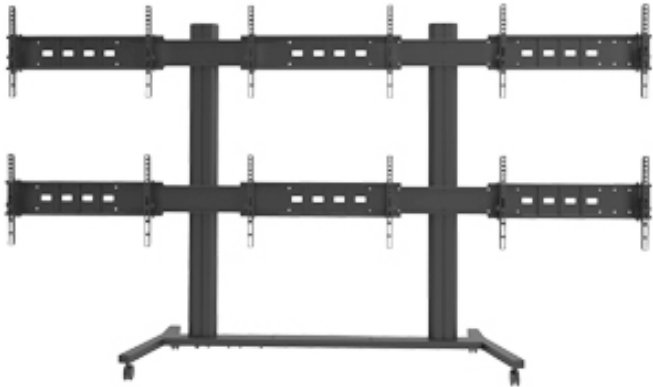
This 4 screen freestanding video wall cart makes it possible to construct video wall in prominent locations for temporary applications.

With the optional floor stand base you can stand or mount it to the floor and make the installation permanent.

M Public Video Wall Stand 4 Screens (2x2) screen array configuration is: 2 screens wide x 2 screens high.

SPECIFICATION M Public Video Wall Stand 3-Screens 40-55" Black

For screen size:	40-55" for each screen
Feature:	3 screen assembly
VESA standard:	Up to 800x400 mm
Article No:	7 350 022 739 789
Size in mm: (WxDxH)	2125 x 600 x 1800
Adjustable height / Depth:	Yes / Yes
Weight:	25 kg
Colour:	Black
Max load per screen:	40 kg
Max load total:	120 kg
Wheel Base / Floor Base:	Included / Optional
Power Rail:	220V, built-in



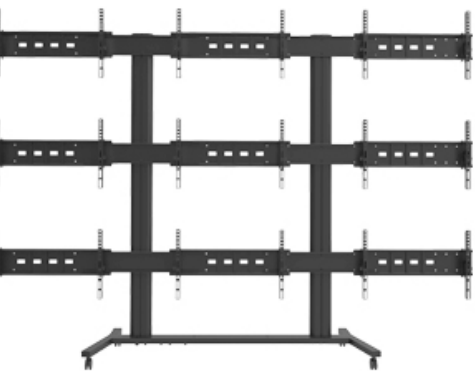
M Public Video Wall Stand 6-Screens

With the optional floor stand base you can stand or mount it to the floor and make the installation permanent.

M Public Video Wall Stand 6 Screens (3x2) screen array configuration is: 3 screens wide x 2 screens high.

SPECIFICATION M Public Video Wall Stand 3-Screens 40-55" Black

For screen size:	40-55" for each screen
Feature:	3 screen assembly
VESA standard:	Up to 800x400 mm
Article No:	7 350 022 739 789
Size in mm: (WxDxH)	3640 x 600 x 1800
Adjustable height / Depth:	Yes / Yes
Weight:	25 kg
Colour:	Black
Max load per screen:	40 kg
Max load total:	120 kg
Wheel Base / Floor Base:	Included / Optional
Power Rail:	220V, built-in



M Public Video Wall Stand 9-Screens

With the optional floor stand base you can stand or mount it to the floor and make the installation permanent.

M Public Video Wall Stand 9 Screens (3x3) screen array configuration is: 3 screens wide x 3 screens high.

SPECIFICATION M Public Video Wall Stand 3-Screens 40-55" Black

For screen size:	40-55" for each screen
Feature:	3 screen assembly
VESA standard:	Up to 800x400 mm
Article No:	7 350 022 739 789
Size in mm: (WxDxH)	3640 x 600 x 2300
Adjustable height / Depth:	Yes / Yes
Weight:	25 kg
Colour:	Black
Max load per screen:	40 kg
Max load total:	120 kg
Wheel Base / Floor Base:	Included / Optional
Power Rail:	220V, built-in

M Public Video Wall Stand Portrait 3/4/9-Screens

Multibrackets Video Wall Stand Portrait is as the standard video wall range a universal video wall stand system with leading material, technology and design that supports a wide variety of video wall configurations. Starting from a modest 3x1 configuration all the way up to 3x3 screens, or beyond in a portrait orientation. Its universal mounting brackets makes compatibility with modern video panels an ease. The range is designed with the needs of public environments and installers in mind. Integrating high security features throughout to ensure display security whilst also maintaining ease of installation via the use of clever time saving and safe installation features.



Standard Screen array configuration for portrait video walls: 3/ 4/ 9 screens high
Flexible Design

Based on a pillar reaching 235cm with its wheelbase and made out of durable aluminum, the possibilities for height adjustments are very good and it is possible to provide perfect viewing angle for both a sitting and a standing audiences. There is a power rail built into each pillar, providing 220V power to the screens or accessories, making installation and cable management an ease.

Made with the critical application in mind

With the right combination of durability and serviceability, we provide standardized and cost efficient solution video walls. We also custom fabricate video walls designed to fit most applications and environments. To tailor each unit to perfection there is a vast range of accessories available to the range: Codec shelf, PC shelf and Cable hooks and much more can all be added to the set up. This makes it easier to match the needs for high performance presentations, trade shows, store or office entrances no matter what function and ideas might be asked for!



M Public Video Wall Stand Portrait 3-Screens

This 3 screen freestanding video wall cart makes it possible to construct a portrait based video wall in prominent locations for temporary applications. With the optional floor stand base you can stand or mount it to the floor and make the installation permanent.

M Public Video Wall Stand 3-Screens
Portrait (3x1) screen array configuration is: 3 screens wide x1 screens high.

SPECIFICATION M Public Video Wall Stand Portrait 3-Screens	
For screen size:	40-55" for each screen
Feature:	3 screen assembly (portrait position)
VESA standard:	Up to 800x400 mm
Article No:	7 350 073 731 800
Size in mm: (WxDxH)	1730 x 1100 x 2200
Adjustable height / Depth:	Yes / Yes
Weight:	40 kg
Colour:	Black
Max load per screen:	40 kg
Max load total:	160 kg
Wheel Base / Floor Base:	Included / Optional
Power Rail:	220V, built-in
Warranty:	5 years



M Public Video Wall Stand Portrait 4-Screens

This 4 screen freestanding video wall cart makes it possible to construct a portrait based video wall in prominent locations for temporary applications. With the optional floor stand base you can stand or mount it to the floor and make the installation permanent.

M Public Video Wall Stand 4-Screens
Portrait (3x2) screen array configuration is: 2 screens wide x2 screens high.

SPECIFICATION M Public Video Wall Stand Portrait 4-Screens	
For screen size:	40-55" for each screen
Feature:	4 screen assembly (portrait position)
VESA standard:	Up to 800x400 mm
Article No:	7 350 073 731 817
Size in mm: (WxDxH)	1250 x 1100 x 2770
Adjustable height / Depth:	Yes / Yes
Weight:	40 kg
Colour:	Black
Max load per screen:	40 kg
Max load total:	160 kg
Wheel Base / Floor Base:	Included / Optional
Power Rail:	220V, built-in
Warranty:	5 years



Portrait 6-Screens

This 6 screen freestanding video wall cart makes it possible to construct a portrait based video wall in prominent locations for temporary applications. With the optional floor stand base you can stand or mount it to the floor and make the installation permanent.

M Public Video Wall Stand 6-Screens
Portrait (3x2) screen array configuration is: 3 screens wide x2 screens high.

SPECIFICATION M Public Video Wall Stand Portrait 6-Screens	
For screen size:	40-55" for each screen
Feature:	6 screen assembly (portrait position)
VESA standard:	Up to 800x400 mm
Article No:	7 350 073 731 824
Size in mm: (WxDxH)	1730 x 1100 x 2770
Adjustable height / Depth:	Yes / Yes
Weight:	40 kg
Colour:	Black
Max load per screen:	45 kg
Max load total:	240 kg
Wheel Base / Floor Base:	Included / Optional
Power Rail:	220V, built-in
Warranty:	5 years

M Public Floorstand HD

Multibrackets Public Floorstand HD is one of the most flexible and multifunctional display stand of its kind that can manage large screens in public environments.

Our M Public Floorstand HD has a versatile usage area. Mainly made out of a light weight aluminum construction it is both heavy duty and will support most ideas and environments it is placed in.

When developed much emphasize has been put into the stability and overall quality of the display stand, both when put in place but also when in movement. As a stable and sophisticated display stand base with wheels are included as standard. This means the series is very easy to move around. This makes it a perfect partner for use in public environments such as conference rooms, class rooms or hospitals.

The M Public Floorstand HD can be used with screens in a standard landscape mode. It can be used with or without shelf (optional) and a camera holder (optional).



Discrete and elegant

SPECIFICATION MPublic Floorstand HD	
For screen size:	60-90"
Feature:	Large screen capacity
Max VESA:	1200 x 700 mm
VESA standard:	400x400 600x400 800x400 700x500 800x500 up to 1200x700 mm
Article No:	7 350 022 737 563
Size in mm: (WxDxH)	1220 x 715 x 1800
Adjustable height /Tilt:	Yes / Yes
Weight:	70 kg
Colour:	White
Max load:	120 kg
DVD Shelf / Camera holder:	Optional, not included
Power rail 220V:	No
Package size:	available shortly
Screen position:	Landscape with tilt
Wheels:	Included
Mount to floor:	No



Present digital content wherever you want it
Easy to assemble and install



Easily roll the display stand through standard size doorways and thresholds
Managing large screens - perfect for conference room, class room or elsewhere



Optional: Camera holder and Shelf available
Aluminum heavy duty, light weight construction



1. M Public Camera Holder

This shelf includes a center slot for securing the videoconferencing camera, which is ideal for the M Public Floorstand HD where there is a greater chance of movement and /or possible damage to camera.

SPECIFICATION M PUBLIC FLOORSTAND CAMERA HOLDER HD	
Suitable for:	M Public Floorstand HD
Article No:	7 350 022 737 587
Adjustable height /Tilt:	Yes / No
Weight:	2 kg
Colour:	White
Max load:	5 kg



2. M Public Floorstand Shelf

M Public Floorstand Shelf HD is designed as a frontshelf to attach on the front of our M Public Floorstand HD. Perfect as accessories for a computer, DVD-player or any other electronic appliances.

SPECIFICATION M PUBLIC FLOORSTAND SHELF HD	
Suitable for:	M Public Floorstand HD
Article No:	7 350 022 737 570
Adjustable height /Tilt:	Yes / No
Weight:	2 kg
Colour:	White
Max load:	5 kg



M Public Ceilingmount Large Single

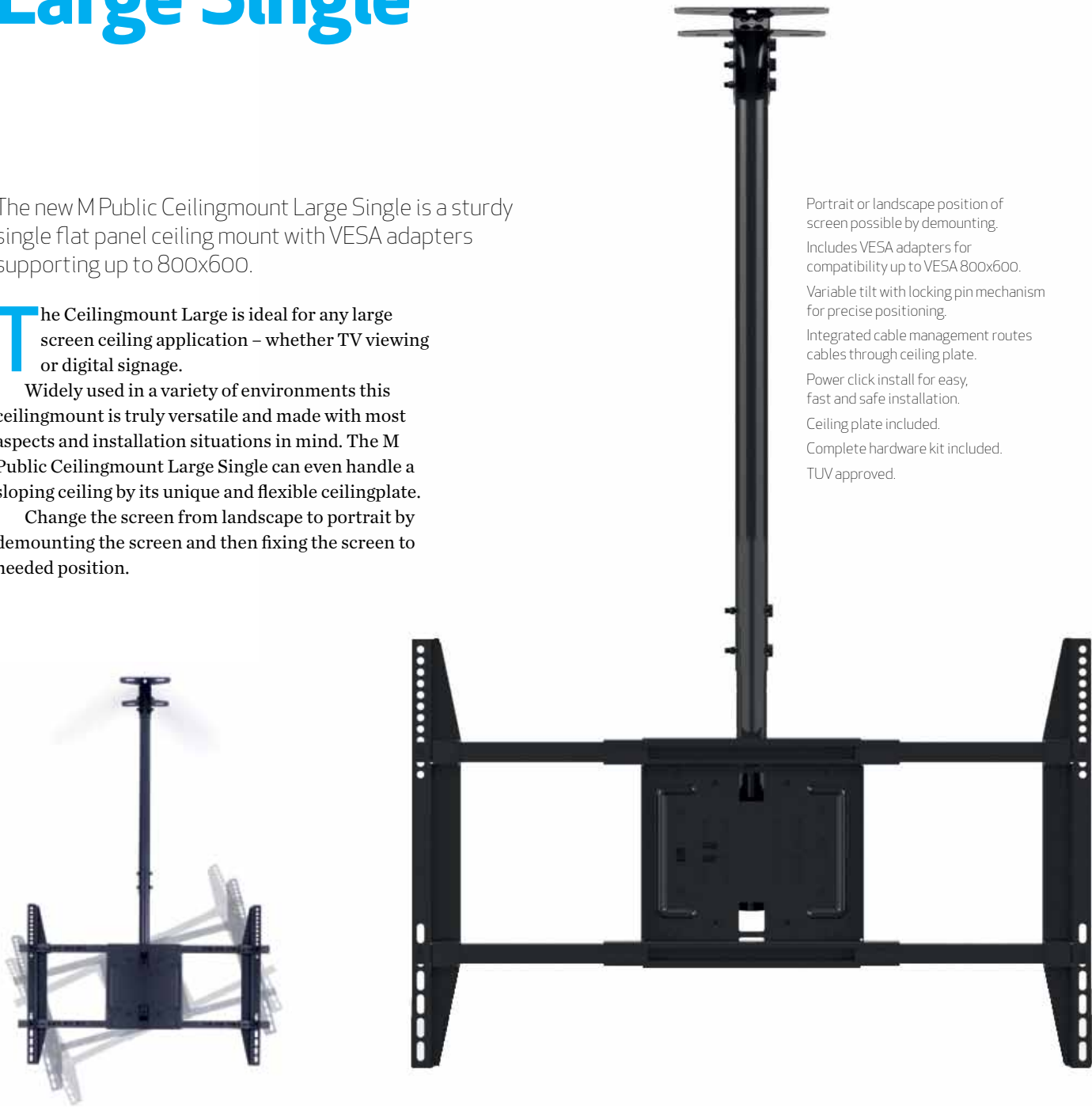
The new M Public Ceilingmount Large Single is a sturdy single flat panel ceiling mount with VESA adapters supporting up to 800x600.

The Ceilingmount Large is ideal for any large screen ceiling application – whether TV viewing or digital signage.

Widely used in a variety of environments this ceilingmount is truly versatile and made with most aspects and installation situations in mind. The M Public Ceilingmount Large Single can even handle a sloping ceiling by its unique and flexible ceilingplate.

Change the screen from landscape to portrait by demounting the screen and then fixing the screen to needed position.

- Portrait or landscape position of screen possible by demounting.
- Includes VESA adapters for compatibility up to VESA 800x600.
- Variable tilt with locking pin mechanism for precise positioning.
- Integrated cable management routes cables through ceiling plate.
- Power click install for easy, fast and safe installation.
- Ceiling plate included.
- Complete hardware kit included.
- TUV approved.



SPECIFICATION M Public Ceilingmount Large Single, 1500mm, Black, TUV, Max 800x600

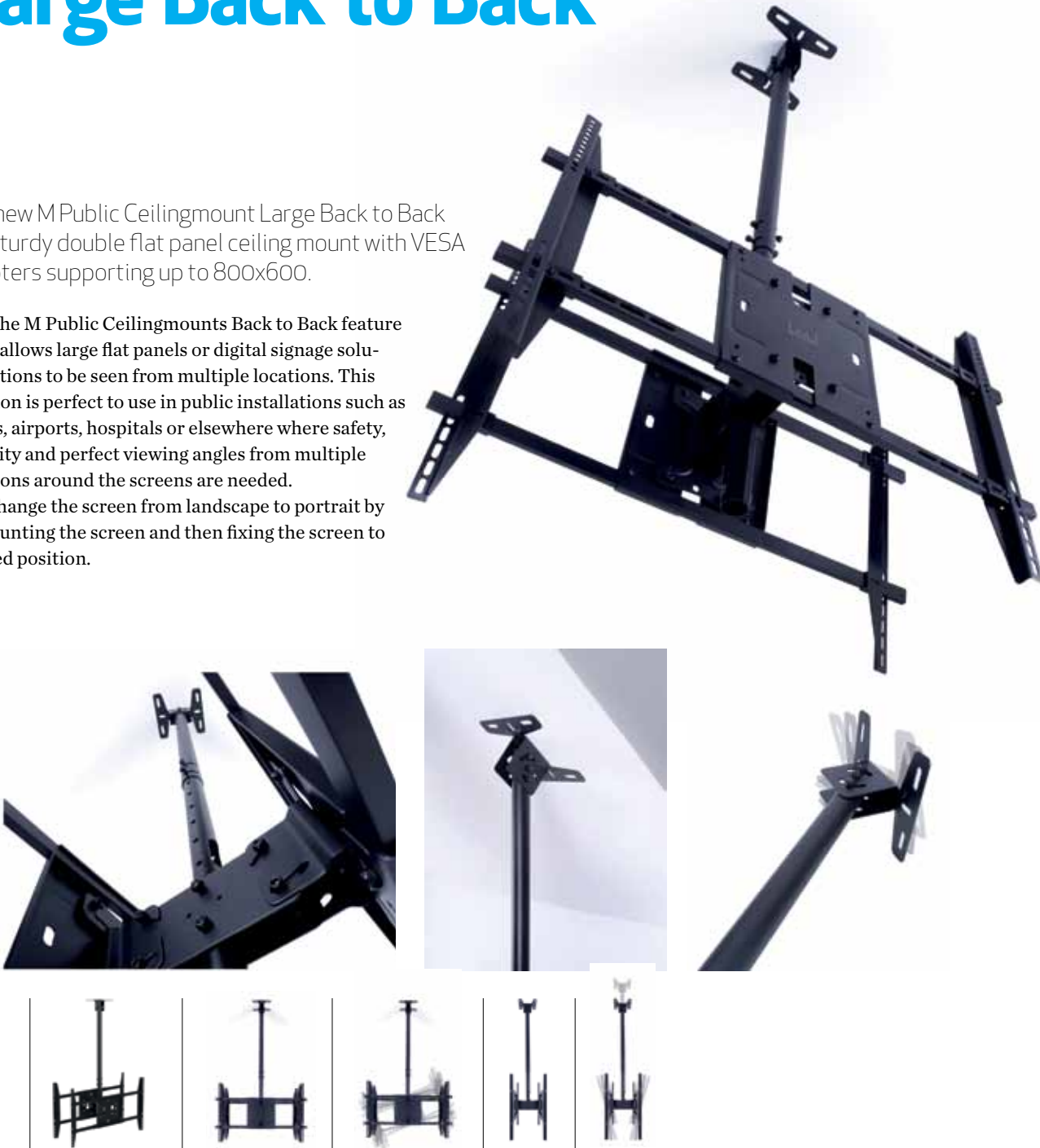
For screen size:	42-63"
VESA standard:	200x200 300x300 400x200 400x400 600x400 800x600 mm
Article No:	7 350 022 735 484
Pillar length:	Min: 832 — Max: 1500 mm
Weight:	8,3 kg
Tilt:	-5°—+15°
Colour:	Black
Max load:	80 kg
Portrait / Landscape mode:	Yes
Turn:	-30°—+30°
Material:	Steel

M Public Ceilingmount Large Back to Back

The new M Public Ceilingmount Large Back to Back is a sturdy double flat panel ceiling mount with VESA adapters supporting up to 800x600.

The M Public Ceilingmounts Back to Back feature allows large flat panels or digital signage solutions to be seen from multiple locations. This solution is perfect to use in public installations such as stores, airports, hospitals or elsewhere where safety, stability and perfect viewing angles from multiple positions around the screens are needed.

Change the screen from landscape to portrait by demounting the screen and then fixing the screen to needed position.



SPECIFICATION M Public Ceilingmount Large Back to Back, 1500mm, Black, TUV, Max 800x600

For screen size:	42-63"
VESA standard:	200x200 300x300 400x200 400x400 600x400 800x600 mm
Article No:	7 350 022 735 491
Pillar length:	Min: 832 — Max: 1500 mm
Weight:	12,4 kg
Tilt:	-5°—+15°
Colour:	Black
Max load:	80 kg
Portrait / Landscape mode:	Yes
Turn:	-30°—+30°
Material:	Steel

- Portrait or landscape position of screen possible by demounting.
- Includes VESA adapters for compatibility up to VESA 800x600.
- Variable tilt with locking pin mechanism for precise positioning.
- Integrated cable management routes cables through ceiling plate.
- Power click install for easy, fast and safe installation.
- Ceiling plate included.
- Complete hardware kit included.
- TUV approved.

M VESA Super Slim Tilt & Turn HD/Plus HD

M VESA Super Slim Tilt & Turn HD (Heavy Duty) ends an era of bulky and heavy arms needed to flex, tilt and turn. If your aim is to find a discreet partner for that new LED, LCD or plasma in a light weight, super strong solution not visible from any side yet giving you a maximum flexibility then the M VESA Super Slim Tilt & Turn HD is your choice.

The uniquely designed low profile M VESA Super Slim Tilt & Turn HD mount fits most 42” and up to 84” flat panels up to 52 kgs. It is very well-suited for those applications where seamless integration counts the most. The M VESA Super Slim Tilt & Turn HD is part of the Super Slim Series of fixed, tilt and cantilever mounts offering a slim design without compromising on functionality. Moreover, this wallmount has an extended profile of 260 mm from the wall.

The specifications this product reveals are simply incredible.

Super Slim defines the minimal 50 mm of the low profile to wall. It extends to a maximum of 260 mm proving that this construction is truly flexible being so lightweight.

Yet still, produced with high quality materials creating a super strong solution carrying screen up to 52 kgs.

Being both super slim and super flexible the built in functions of the wall mount allows you to optimize the screen for the perfect viewing angle. Wherever you are.

M VESA Super Slim Tilt & Turn HD is suitable for a wide range of screens sized 42” and up to 84”. The VESA standards that are supported by this mount is 100 / 200 / 300 and up to 400 mm. If needed, the wall mount can be combined with an optional VESA extender kit which enables the 600x400 mm VESA standard. This means that M VESA Super Slim Tilt & Turn HD is suitable for most of the VESA standards including the rare ones.



Marc Jacobs Digital Signage installation with TnT HD

SPECIFICATION M VESA Super Slim Tilt & Turn HD (Heavy Duty)	
For screen size:	42-84"
Universal & VESA standard:	100x100 200x100 200x200 300x300 300x200 400x200 400x400
Article No:	7 350 022 735 101
Size in mm:	595 x 294 x 50 (W x H x D)
Distance to wall:	VESA 100 / 200 / 300: 40mm
Distance to wall with extender arms:	VESA 400: 50mm
Weight:	7.7 kg
Colour:	Black
Max load:	52 kg
Distribution package:	4 pcs
Distance to wall:	min 48mm — max 260mm
Single box size (WxDxH):	687x80x365mm
Units on a EUR-pallet:	80 pcs
For VESA 600x400 600x300 600x200:	



The flexarms nest for a super slim 50 mm mounting profile
Flex, tilt and turn for an optimal viewing angle at any time
Tilt easily to -2°~+7° to reduce glare
Turn effortlessly to -20°~+20° depending on screen size to view from the right angle
Installation template and tool kit included for simple mounting
Built in bubble level for accurate mounting
One person tilt adjustment



SPECIFICATION M VESA Super Slim Tilt & Turn Plus HD	
For screen size:	42-84"
Universal & VESA standard:	100x100 200x100 200x200 300x300 300x200 400x200 400x400
Article No:	7 350 022 739 697
Size in mm:	595 x 294 x 48-449 (WxHxD)
Distance to wall:	VESA 100 / 200 / 300: 49mm
Distance to wall with extender:	VESA 400: 59mm
Weight:	10 kg
Colour:	Black
Max load:	65 kg
Distribution package:	3 pcs
Single box size (W°D°H):	687*80*365mm
For VESA 600x400 600x300 600x200: Combine with optional M Extender Kit Tilt & Turn	



Up to 84° or 65 kg max load
The flexarms nest for a super slim 50 mm mounting profile
Flex, tilt and turn for an optimal viewing angle at any time
Tilt easily to -2°~+7° to reduce glare
Turn effortlessly to -20°~+20° depending on screen size to view from the right angle
Installation template and tool kit included for simple mounting
Built in bubble level for accurate mounting
One person tilt adjustment

M Extender Kit Tilt & Turn

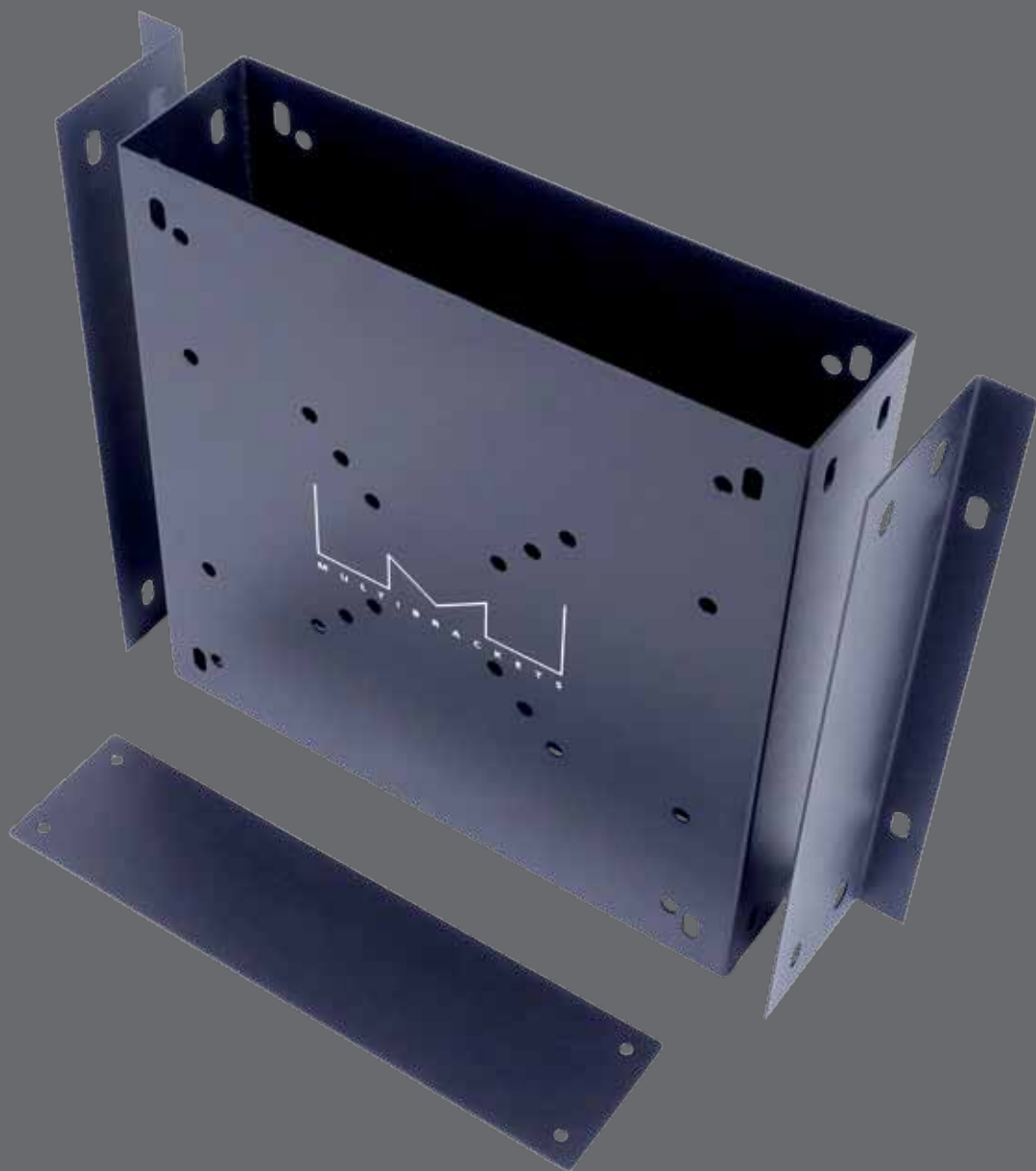
M VESA Super Slim Tilt & Turn ends an era of bulky and heavy arms needed to flex, tilt and turn. If your aim is to find a discreet partner for that new LED, LCD or plasma in a light weight, super strong solution not visible from any side yet giving you a maximum flexibility then the M VESA Super Slim Tilt & Turn is your choice.

M Extender Kit Tilt & Turn allows you to enrich the functionality of the M VESA Super Slim Tilt & Turn in order to fit the non-standard screens with VESA standards of 600x400mm.

SPECIFICATION M Extender Kit Tilt & Turn 600x400	
Universal & VESA standard:	600 x 400, 600 x 300, 600x200
Article No:	7 350 022 734 043
Size in mm:	3,8 x 61,5 x 1,8 (WxHxD)
Weight:	0,5 kg
Colour:	Black
Distribution package:	1 pc

Digital Signage Boxes

Made to keep the installed items for a digital signage installation in place.



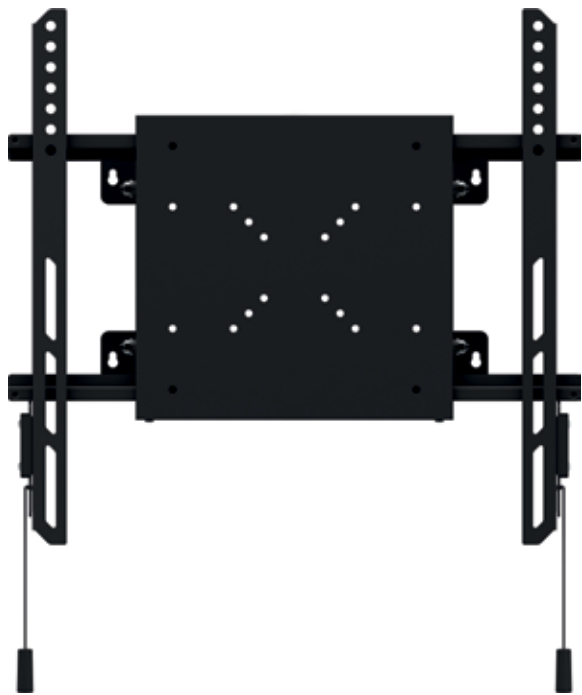
M PC Media Box Digital Signage Box I 200x200

A versatile 200x200 bracket with storage possibilities.
perfect for Digital signage installations and more.

SPECIFICATION M PC Media Box / Digital Signage Box I 200x200 Fixed

Article No:	7 350 022 735 514
VESA Standard:	50x50 75x75 100x100 200x100 200x200
Weight:	1 kg
Colour:	Black
Inside max measurements:	248x248x63mm (WxHxD)
Outside max measurements:	250x250x65mm (WxHxD)
Top input hole:	248x63mm, Open
Bottom input hole:	230x45mm, Can be closed with bottom plate
Material:	Steel
Warranty:	5 years

If you want to create an uninterrupted playback of your presentation and information with clean and hassle free installation Multibrackets Digital Signage boxes might just be what you need. Designed as an inexpensive solution for mass deployment the boxes delivers function and quality at high level. Choose between three models. With box space built in it is possible to have a media player, Mini PC or another device just behind the screen close to the in and outlets found on the screen.



M PC Media Box Digital Signage Box I 400x400

A versatile bracket with storage possibilities.
perfect for Digital signage installations and more.

SPECIFICATION M PC Media Box / Digital Signage Box I 400x400 with Tilt

Article No:	7 350 022 731 831
VESA Standard:	50x50 75x75 100x100 200x100 200x200 300x200 300x300 400x200 400x400
Weight:	1,5 kg
Colour:	Black
Inside max measurements:	248x248x63mm (WxHxD)
Outside max measurements:	250x250x65mm (WxHxD) without extenders 400x400
Top input hole:	248x63mm, Open
Bottom input hole:	230x45mm, Can be closed with bottom plate
Material:	Steel
Warranty:	5 years



M PC Media Box Digital Signage Box II

A large size mediabox with vast storage possibilities. Perfect for M Public
Display Stand series, Digital signage installations and more.

SPECIFICATION Multibrackets Digital Signage Box II

Article No:	7 350 073 731 046
VESA Standard:	50x50 75x75 100x100 200x100 200x200 300x200 300x300 400x200 400x400
Weight:	10 kg
Colour:	Black
Inside measurements:	430x450x90mm (WxHxD)
Outside measurements:	485x480x120mm (WxHxD)
Lock and key included:	2pcs
Top input holes:	Yes
Bottom input holes:	Yes
Warranty:	5 years

Small screen

M VESA Digital Signage Wallmount

Bring out your message with ease. The M VESA Digital Signage Wallmount is a powerful product for your in-store communication. Implement a powerful message and refresh it in seconds in landscape or portrait position any time without tools being involved.

If your need is to bring high attention to your presentations and streaming videos the M VESA Digital Signage Wallmount Digital Signage might be what you are looking for.

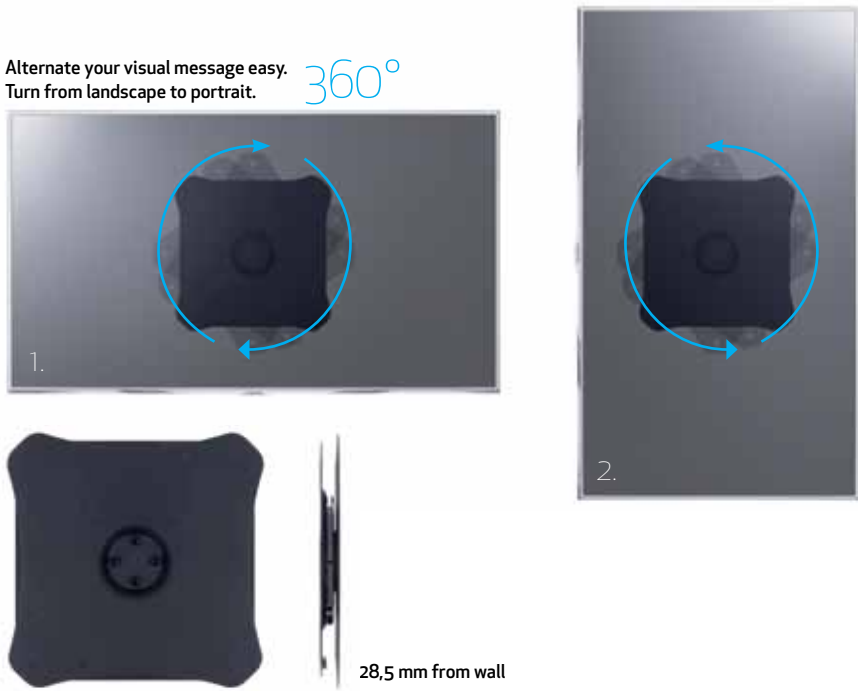
This heavy duty construction holding 50 kgs is made to keep your screen safe on the wall.

Supporting 75x75, 100x100, 200x100, 200x200mm VESA standards.

In many digital signage installations the need to rotate the screen depending on the message presented is some-

times needed. This the M VESA Digital Signage Wallmount handles with ease. With quick and effortless ability to manipulate content in real-time to influence audience behavior and being able to turn the mounted screen in landscape or portrait depending on time and message makes this Wallmount able to take your communication one step further.

Our M VESA Digital Signage Wallmount creates a powerful impact anyway you want to present your message.



SPECIFICATION M VESA Digital Signage Wallmount Black	
For screen size:	15-40"
VESA standard:	75 x 75, 100 x 100, 200 x 100, 200 x 200 mm
Article No:	7 350 022 737 129
Rotate / Tilt:	Yes, 360 degrees / Non-tiltable
Weight:	2,8 kg
Colour:	Black
Max load:	50 kg



Large screen

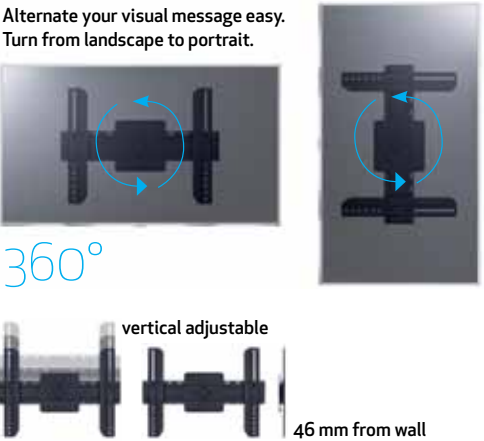
M Universal Digital Signage Wallmount

New M Universal Digital Signage Wallmount Include a 360 turn feature giving access to landscape to portrait screen positioning in just seconds.

Our New M Universal Digital Signage Wallmount has optimized features for commercial use and creates a powerful impact anyway you want to present your message.

This version of our 360 rotatable digital signage mount solution is perfect if you need larger screens to do the work.

The heavy duty construction holding 50kgs is made to keep your screen safe on the wall, supporting 200 x 200, 300 x 200, 300 x 300, 400 x 400mm, 600 x 400 VESA standards, making screens up to 60-70" possible to use. This product is perfect for in store presentations making message presentations in landscape and portrait possible, whenever the store feels the need.



SPECIFICATION M Universal Digital Signage Wallmount Black	
For screen size:	32-63"
VESA standard:	200 x 200, 300 x 200, 300 x 300, 400 x 200, 400 x 400, 600 x 400 mm
Article No:	7 350 022 737 136
Rotate / Tilt:	Yes, 360 degrees / Non-tiltable
Weight:	4,6 kg
Colour:	Black
Max load:	50 kg
Universal:	Max holepattern 600 mm wide and 405 mm high