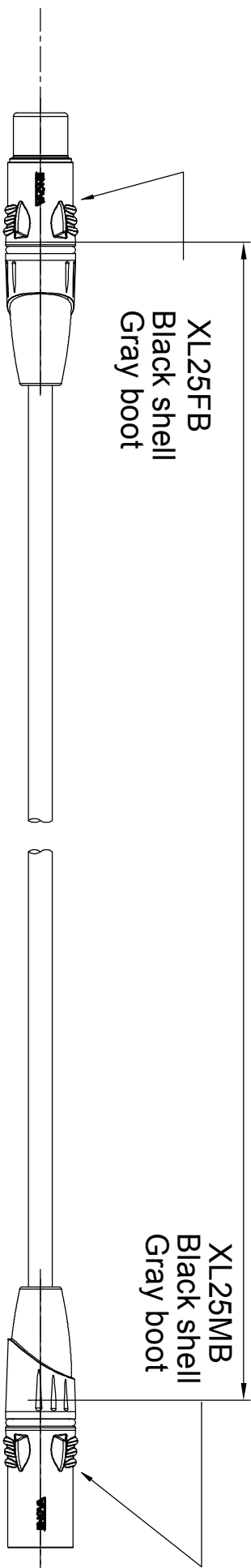


1		2		3		4		5		6		7		8	
ISS	ZONE	REVISIONS													
DESCRIPTION \ PER REQUEST \ DATE															
V	OPEN	Open drawings to customers													

ENOVA - PROFESSIONAL DMX CABLE

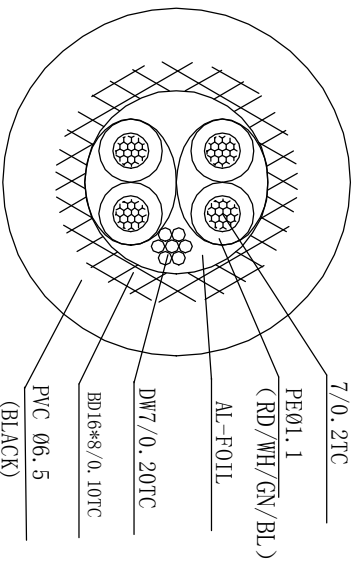
L = 5M / 6M / 7M / 10M

XL25FB
Black shell
Gray boot



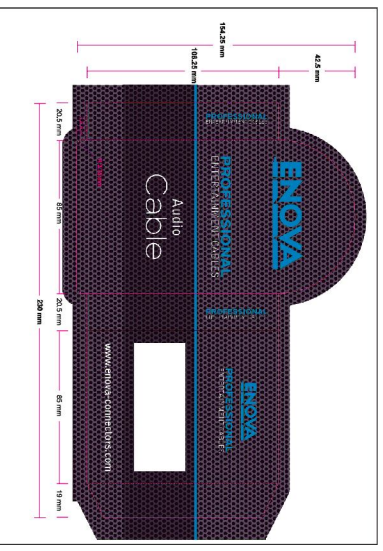
XL25MB
Black shell
Gray boot

CABLE NO.: EC-L1-Bulk-100

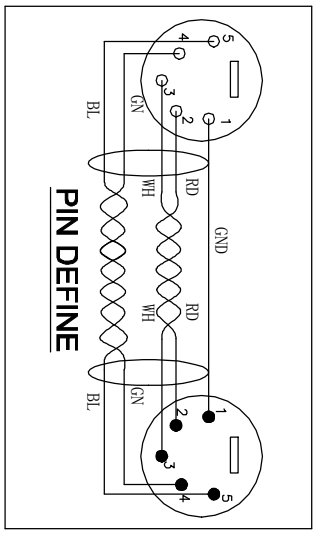


CABLE SECTION (6/1)

Part No.
EC-L1-XLFM5-5
EC-L1-XLFM5-6
EC-L1-XLFM5-7
EC-L1-XLFM5-10



Medium size sleeve: 230x154MM



DIMENSIONS ARE IN MILLIMETERS		APPROVED	DATE	TITLE		PART NO.	REV.
UNLESS OTHERWISE SPECIFIED		CHECKED	DATE	Connector Distribution GmbH		EC-L1-XLFM5-5	A1
TOLERANCES		DRAWN	DATE	XLR 5PIN MALE TO XLR 5PIN FEMALE(L=5M/6M/7M/10M)			
ANGLES = ±5°		FILE NO.					
UP TO 6 = ±0.2		ERP LINK:					
6-40 = ±0.4							
40-120 = ±0.6							
120-315 = ±1							
ABOVE 315 = ±50							
THIRD_ANGLE							
SCALE	1/1						