

M Universal Flexarm II Black

Introducing the tightest fitted flexible arm for large plasma and LCDs on the market. If you are looking for a flexible arm with the tightest fit to the wall, when not flexed, Multibrackets Flexarm II is your choice.

Multibrackets Universal Flexarm II Silver has an elegant design making it one of the best looking high performance wall mounts of its kind. Multibrackets Universal Flexarm II Silver lets you decide how close to the wall you want the screen to be, from 60mm to 370mm.

The black wall mount is included in the flex arm package. This black wall mount blends in perfectly with the back of the screen, and also enables you to fasten the screen to the wall if you should like to at a later stage.

Thanks to the Multibrackets Anti-theft system, you can lock the screen to the flexarm.

- M Universal Flexarm II Silver is made in aluminium
- Distance from the wall between: 60-370 mm

The M Universal Wallmount and the M Universal Wallmount Super Slim are patented by Multibrackets.

Patent SE 526 502

Patent DK, FI, IT, NL, PL, RO, CH, ES, GB, TR, CZ, FR 1 725 779

Patent DE 60 2005 022 569.2-08

Patent US 7,661,640

SPECIFICATION

M Universal Flexarm II Black 26"-32"

For screen size:	26"-32"
Universal:	Max holepattern 450 mm wide and 300 mm high
VESA standard:	75x75 100x100 200x200 300x300 400x200 mm
Article No:	7 350 022 732 711
Size in mm:*	200x350
Tilt:	No
Weight:	5 kg
Colour:	Black
Max load:	40 kg
Distribution package:	4 pcs
Warranty:	5 years

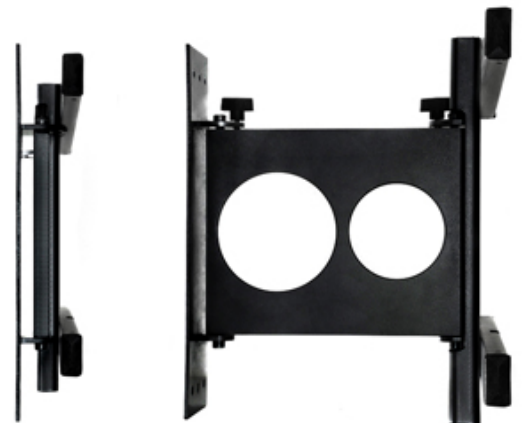
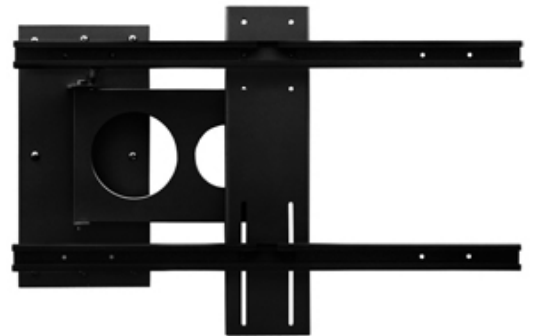
Quick facts

Suitable for: LCD & Plasma

Screen size: 26-32"

Change mount colour:

Change mount size:



Click on the thumbnail for a larger image:



Downloads

- [Manual](#)
- [High resolution photos](#)